

SOUTHERN ILLINOIS UNIVERSITY EDWARDSVILLE
History and Systems of Psychology (PSYC 409-02)
Course Syllabus – Winter 2024

COURSE INFORMATION

QUICK INFO

Course Number:	PSYC 409-001
Credit Hours:	3 credit hours
Class Meeting Dates:	10/14/24 – 12/13/24
Class Meeting Times:	Asynchronous
Class Meeting Location:	Online
Instructor:	Ashley Abraham, PhD
Office Hours:	TBA and by appointment
Office Location:	AH 0136
E-mail:	ashabra@siue.edu
Prerequisites:	Undergraduate level PSYC 111 Minimum Grade of D
Required Textbook:	Henley, T. B. (2019). <i>Hergenhahn's An introduction to the history of psychology</i> (9th ed.). Cengage Learning.

COURSE DESCRIPTION

TL/DR: This course focuses on the important antecedents of contemporary scientific psychology, including issues, conceptual development, major schools and systems.

This course will increase your awareness of the roots of contemporary psychology and your understanding of the continuity of ideas, the role of the Zeitgeist in history, and the existence of psychology in the broader contexts of science and society

You will be introduced to major historical figures and important systems within the discipline of psychology. We will examine the persistent problems or questions of interest to psychologists, and the dominant paradigms and models operating in contemporary psychology. Throughout the course, we will emphasize methods of investigation, the historical figures and forces (Zeitgeist) that shaped the theories and methods, and relevance to current conceptions of mind and behavior. We will also strive to connect historic themes and debates within psychology to contemporary issues and current events.

LEARNING OUTCOMES

When you have completed this course, you should be able to:

1. Explain the approaches used to study the history of any discipline.
2. Describe the various processes involved in the development of modern psychology.
3. Describe the contributions of some of psychology's most transformational people.
4. Describe the significance of important events in psychology's history.
5. Integrate knowledge from multiple areas of psychology (e.g., clinical, cognitive, developmental, experimental, industrial/organizational, and social).
6. Explain the historical (e.g., social, political, and economic) context within which modern psychology developed.
7. Explain the role of religious, racial, and gender minorities in the development of modern psychology.
8. Explain the role of world wars in the development of modern psychology.

ACTIVITIES SUPPORTING LEARNING OUTCOMES INCLUDE, BUT ARE NOT LIMITED TO, CLASS/GROUP DISCUSSION, LECTURE, PARTICIPATING IN DEMONSTRATIONS, QUIZZES, EXAMS, PRESENTATIONS, VIEWING AND DISCUSSING VIDEOS, TEXTBOOK READINGS, HOMEWORK ASSIGNMENTS, READINGS FROM PROFESSIONAL AND LAY PERIODICALS, PARTICIPATING IN RESEARCH STUDIES, PARTICIPATING IN CLASS DEMONSTRATIONS AND WRITING ARTICLE SUMMARIES AND/ OR REFLECTION PAPERS.

REQUIRED TEXTS

TEXTBOOK

Henley, T. B. (2019). *Hergenhahn's An introduction to the history of psychology* (9th ed.). Cengage Learning.

OUTSIDE READINGS

All other required readings will be posted on Perusall. Perusall is a collaborative learning tool that you can access directly from BB. If you are unfamiliar with Perusall, please complete the optional assignment, Making the Most of Perusall. Readings may consist of excerpts, primary source documents, historical and contemporary journal articles, and other online material.

OTHER READINGS

- Notice that many valuable papers in the history of psychology may be found at [HTTP://PSYCHCLASSICS.YORKU.CA/](http://psychclassics.yorku.ca/) or [HTTP://PSYCHCLASSICS.ASU.EDU/](http://psychclassics.asu.edu/)
- There is a website that describes “today in the history of psychology” at [HTTP://WWW.CWU.EDU/~WARREN/TODAY.HTML](http://www.cwu.edu/~warren/today.html)

TECHNOLOGY REQUIREMENTS

Students Need...

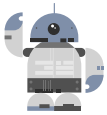
1. A reliably working **computer** that runs Windows or Mac OS. Tablets and smart phones might work for some things in this course, but we can't guarantee they will work for everything. Chromebook laptops are also problematic. If you do not have a working computer that runs Windows or Mac OS, contact Information Technology Services about borrowing a laptop from the university. There are also computers for student use in the library.
2. Reliable internet access on a regular basis.
3. Functional SIUE e-mail, Teams and Blackboard accounts
4. Microsoft Office 365 (Word and PowerPoint)
5. To use a word processor, such as MS Word, to compose assignments, and be able to use [tracked changes](#) and [comments](#) from your instructor
6. To use a slide presentation program such as MS PowerPoint
7. To attach files to emails and upload them to Blackboard
8. Know how to give files meaningful names, and store them in [meaningful folder structures](#) on your computer (this will be very important in this course – make sure you know how to do it)
9. To be able to navigate websites and course materials
10. Know how to reach out to tech support staff when issues arise and troubleshoot to resolve problems

Additional guidance for taking online courses can be found here, [Online at SIUE](#)

COURSE TOOLS

- **Blackboard:** Primarily a “classroom” space
 - Assignments
 - Course Material
 - Other resources
- **Microsoft Teams:** Primarily a communication space. I recommend downloading and installing the app on your computer instead of using the browser version
 - Ask questions here
 - Work on group projects
 - Office hours
- **Microsoft Office:** download and install here, <https://www.siu.edu/its/office365/install.shtml>

AI USE POLICY



Light Assistance with Non-Substantive Tasks. In this course, students must be the primary and majority authors of text, code, analysis, and all course work products and assignments. Students are permitted to use AI to generate ideas, polish text they have drafted, or perform tasks that are not essential to completing the learning outcomes of the course (see this link for more information <https://www.siu.edu/faculty-center/resources/Syllabus-symbols.pdf>). Students are encouraged to keep drafts of assignments and logs of interactions with AI applications to demonstrate their contribution and original authorship, and to check what is permissible for each assignment. All assignments will be submitted via Turnitin, a tool with embedded AI detection.

Generative AI is considered plagiarism and is subject to the same sanctions. If you are found to be using generative AI to complete assignments in this course, you will be reported to academic misconduct. Students suspected of using generative AI will be required to complete assignments and exams orally.

STATEMENT ON SENSITIVE CONTENT



Some of the topics covered in this course will touch on sensitive issues. These include but are not limited to, mental illness such as anxiety and depression, including information on suicide, trauma and abuse, identity-based violence. Although you are not expected to share personal information in class, discussing these issues as a group is unavoidable. Please take the time to care for yourself and seek assistance at Counseling Services. You can learn more about their services by visiting <https://www.siu.edu/counseling/>. I also encourage you to speak with me. You do not need to share why the topic may be distressing, but by alerting me that you may not be able to participate during particular discussions, we can then work together to find alternate ways for you to engage with course topics.

COMMUNICATION



It is extremely important that you maintain communication with me. You are expected to check Teams and to log on to the Blackboard course website daily. Announcements will be posted on Teams (make sure your email notifications for announcements are turned on).

Please feel free to speak with me if you have any questions or concerns. It is important to meet with me as early as possible in the semester if you are struggling in the course.

Drop-in hours.

Drop-in hours (office hours) will be posted by Week 3 of the semester. You can come to drop-in hours for any reason without an appointment. Come in to talk about the course, your grade, or just to say hello! Outside of drop-in hours, if my door is open, feel free to pop in.

I will also be available for virtual drop-in office hours via Teams, no appointment necessary. During virtual drop-in hours, I will be available for live chat and live meetings on a first come, first served basis.

Schedule a meeting. You will use Microsoft Bookings (*note, I am in the process of setting up Bookings or a similar service; I will send a link via a BB announcement when I have an update). to schedule meetings with me. My availability is listed. Select the type of meeting (in-person or virtual) and the length of the meeting (15 or 30 minutes). Then, use the calendar to check availability on the day you'd like to meet. Find a time that works for you and leave me a brief description of what you would like to discuss. If you select a virtual meeting, I will call you via Teams at the scheduled time.

Teams. Please address me as Dr. Abraham, Professor Abraham, or Prof. Abraham. If you have questions, the **best way to get in touch with me is MS Teams**. Please post in the "Help Me!" channel unless your question is personal or very specific to you, in which case you can direct message me on Teams. Email is also an option, but I get bombarded by email everyday so I'm more likely to miss an email. I will do my best to respond within 24 hours on weekdays.

Questions about technology issues are usually more appropriate for ITS, but I will do my best to address the issue.

COURSE EXPECTATIONS

YOU ARE EXPECTED TO BE AN ACTIVE PARTICIPANT IN YOUR LEARNING AND A GOOD CITIZEN OF THE CLASSROOM. THIS MEANS YOU WILL:

- Come to all class prepared by having completed readings and assignments BEFORE class
- Participate meaningfully in classroom discussions and activities
- Check your Teams account, university e-mail and Blackboard several times each week for announcements and feedback
- Communicate with me about questions and issues related to the course
- Contact help@siue.edu with your questions related to Blackboard and other technical difficulties.
- Cooperate in creating a safe, inclusive, and productive course climate

YOU SHOULD SPEND 2 HOURS OUTSIDE OF CLASS FOR EVERY 1 HOUR IN CLASS

EACH WEEK, YOU WOULD NORMALLY SPEND 7.5 HOURS IN CLASS – THIS MEANS YOU NEED TO INVEST AT LEAST 15 HOURS OUTSIDE OF CLASS FOR A MINIMUM OF 22.5 HOURS EACH WEEK FOR 5 WEEKS.

[HTTP://WWW.SIUE.EDU/POLICIES/114.SHTML](http://www.siue.edu/policies/114.shtml)

GRADES AND ASSIGNMENTS

GRADING SCALE

Please note it is your responsibility to keep track of your performance in the course. Grades are calculated on a straight percentage (i.e., no rounding).

Description	Point Range	Percentage Range	Letter Grade
Exemplary	900 - 1000	90 - 100	A
Good	800 – 899	80 – 89	B
Satisfactory	700 – 799	70 – 79	C
Poor	600 – 699	60 – 69	D
Failing	0 – 599	0 - 59	F

ASSESSMENTS FOR FINAL GRADE

Assignments	Course Outcomes	Percent of Final Grade	Points
Exams (3 @ 100 pts each)	1-8	30%	300
Profile Project	1-8	30%	300
Homework	1-8	30%	300
Discussion Assignments (5 @ 20 pts each)	1-8	10%	100
TOTAL POINTS			1000

ASSIGNMENTS

LATE POLICY

You have seven 'late days' to use at your discretion. Each 24-hour period after the due date counts as one 'late day.' So, if you submit an assignment within 24 after the due date, you have used one late day; submit it within 48 hours and you've used 2 late days. If you submit an assignment seven days after the due date, you have used all seven late days on this one assignment and will not be able to turn in any other late assignments without losing points. Said another way, you can be up to 24 hours late on 7 different assignments, 7 days late on one assignment, or you can spread your late days across a couple of assignments. As long as you have late days to use, you will not be penalized for late assignments. If you run out of late days, you will lose 50% of the total points for each day it is late, and no late assignments will be accepted more than 3 days past the due date. *NOTE: you may not use late days on group graded assignments.*

To use your late days, you **MUST FILL OUT THE LATE DAY FORM on BB PRIOR TO THE DUE DATE.**

SUBMITTING ASSIGNMENTS

Written assignments, including discussion assignments and components of the profile project must be submitted on BB unless otherwise noted in the assignment. Assignments emailed to me will not be accepted!

PREPARATION AND PARTICIPATION

Coming to class prepared means you have completed the readings and other assignments **before** viewing lecture videos or completing any lecture related activities. You should be prepared to discuss, work in small groups, and complete other activities.

DISCUSSION ASSIGNMENTS (5 @ 20PTS EACH)

We will have 5 discussions throughout the semester. You will be expected to contribute to the class discussion via Teams. Following each discussion, you will complete a discussion assignment posted on BB.

PROFILE PROJECT

You will create a poster modeled on a social media profile or virtual museum exhibit that includes information about your figure or topic's contribution to the development of psychology. Along with this, you will write a 2-3 page, double-spaced reflection on the creation of your poster and a rationale for including the content you chose. More information about this assignment will be posted on BB.

EXAMS (3 @ 100PTS EACH)

You will take three exams throughout the semester via BB. The third exam will be cumulative.

HOMEWORK (6 @ 50PTS EACH)

You will complete 6 homework assignments throughout the semester. Homework assignments are intended to deepen your understanding of some of the most important course concepts, including how to actually 'do' history.

MAKE-UP EXAM POLICY

You must provide a valid and documented reason to be eligible for a make-up exam. You should do everything you can to make sure complete the exam on the scheduled exam date. It is your responsibility to make arrangements with me to retake your exam.

PSYCHOLOGY DEPARTMENT POLICIES

POLICY ON PLAGIARISM

Plagiarism includes presenting someone else's words without quotation marks (even if you cite the source), presenting someone else's ideas without citing that source, or presenting one's own previous work as though it were new. When paraphrasing from another source or your own work, at the very least, the student should change the wording, sentence syntax, and order of ideas presented in the paper. Additionally, you should not submit a paper, or parts of a paper, written to fulfill the requirements of one class for the requirements in another class without prior approval of the current instructor and appropriate citation. Ideally, the student will integrate ideas from multiple sources while providing critical commentary on the topic in a way that clearly identifies whether words and ideas are those of the student or are from another source. Plagiarism is one type of academic misconduct described in SIUE's Student Academic Code (<http://www.siu.edu/policies/3c2.shtml>). University policy states that "Normally a student who plagiarizes shall receive a grade of F in the course in which the act occurs. The offense shall also be reported to the Provost." (<http://www.siu.edu/policies/1i6.shtml>). The University policy discusses additional academic sanctions including suspension and expulsion from the University. To ensure that you understand how to avoid plagiarism, we encourage you to review the information on plagiarism provided on the Department of Psychology web page at <http://www.siu.edu/education/psychology/plagiarism.shtml>.

SERVICES FOR STUDENTS NEEDING ACCOMMODATIONS

It is the policy and practice of Southern Illinois University Edwardsville to create inclusive learning environments. If there are aspects of the instruction or design of this course that result in barriers to your inclusion or to accurate assessment of achievement—such as time-limited exams, inaccessible web content or the use of non-captioned videos—please contact Accessible Campus Community and Equitable Student Support (ACCESS) as soon as possible. In order to properly determine reasonable accommodations, students must register with ACCESS either online at siue.edu/access or in person in the Student Success Center, Room 1203. You can also reach the office by emailing us at myaccess@siue.edu or by calling 618-650-3726. If you feel you would need additional help in the event of an emergency situation, please notify your instructor to be shown the evacuation route and discuss specific needs for assistance.

POLICY ON INCOMPLETE GRADES

It is the student's responsibility to officially withdraw from a course by the dates set by the University if the student is not intending to complete the course. Students who do not withdraw and have not completed the course will receive an F. Only under special circumstances a faculty member may agree to give a student an Incomplete (INC) grade in order to allow the student to complete the remaining work for the course no later than the end of the following semester. An INC is never automatic but must be approved by the professor. If a professor agrees to give a student an INC grade, the professor and the student will fill out a form (Memorandum of Incomplete Grade) indicating why an INC is being given. One copy of the completed form will be given to the student, one copy will be given to the professor, and the Department of Psychology secretary will keep one copy. If the work is not completed by the time specified on the Memorandum of Incomplete Grade form, the grade will be changed from INC to F.

WRITING POLICY

As a student in this course, you will be expected to display university-level writing, which includes completing course assignments that meet the following basic writing criteria. Specifically, all written assignments completed for this course should include:

- clear transitions from sentence to sentence and idea to idea (e.g., paper is organized/flows well)
- verb tense consistency
- clear and unambiguous sentences and ideas
- writing that is free of typos, spelling errors, and major grammatical errors
- properly formatted citations and references (if relevant)

This is by no means an exhaustive list of basic writing skills, but it will give you an idea of what we are looking for in our papers. If you feel you need help with your writing, you are encouraged to seek assistance from the writing center on campus (<http://www.siu.edu/is/writing>) or utilize one of the many online resources they have identified to help students (<http://www.siu.edu/is/writing/resources.shtml>). If your graded written assignments fail to meet the basic writing requirements listed above (and any others found to be appropriate by your instructor), the instructor will stop the grading process and return the paper to you (see below for the specific policy for this class). The penalty for unacceptable writing in this class is as follows: You will have one week to revise and resubmit your paper through Blackboard, and you will lose 10 points from the final grade.

SIUE PSYCHOLOGY DEPARTMENT TWITTER

By following our department's Twitter page (@SIUEpsychology) you will be able to get announcements, find out what is happening in the department, and learn more about recent psychology news. Also, this is also a great way to stay connected with the Department of Psychology after you graduate from SIUE.

SIUE POLICIES AND STATEMENTS

SIUE STATEMENT ON DIVERSITY

All societies and peoples have contributed to the rich mix of contemporary humanity. In order to achieve domestic and international peace, social justice, and the development of full human potential, we must build on this diversity. SIUE nurtures an open, harmonious, and hospitable climate that facilitates learning and work. Each member of the University is responsible for contributing to such a campus environment.

SIUE NONDISCRIMINATION POLICY

Southern Illinois University Edwardsville (SIUE) is a public comprehensive University committed to creating and maintaining a diverse community in which students, faculty, and staff can learn and work together in an environment free of discrimination and free from any form of illegal harassment. Such actions violate the dignity of the individual and the integrity of the University as an institution of learning. SIUE prohibits discrimination against employees, applicants for employment and students on the basis of age, color, disability, marital status, national origin, race, religion, sex, sexual orientation, or veteran's status. Discrimination in any form will not be tolerated; management and supervisory personnel, at all levels, are responsible for taking reasonable and necessary action to prevent discrimination.

ACADEMIC INTEGRITY

Students are reminded that the expectations and academic standards outlined in the Student Academic Code (3C2) apply to all courses, field experiences and educational experiences at the University, regardless of modality or location. The full text of the policy can be found here: <https://www.siue.edu/policies/3c2.shtml>.

RECORDINGS OF CLASS CONTENT

Faculty recordings of lectures and/or other course materials are meant to facilitate student learning and to help facilitate a student catching up who has missed class due to illness or quarantine. As such, students are reminded that the recording, as well as replicating or sharing of any course content and/or course materials without the express permission of the instructor of record, is not permitted, and may be considered a violation of the University's Student Conduct Code (3C1), linked here: <https://www.siue.edu/policies/3c1.shtml>.

POTENTIAL FOR CHANGES IN COURSE SCHEDULE OR MODALITY

As the COVID-19 pandemic continues, there remains a possibility that planned classroom activities will need to be adjusted. Depending on circumstances and following state-issued recommendations, potential changes include changes in course modality (e.g., transition from face-to-face to online) or in course scheduled meetings. These changes would be implemented to ensure the successful completion of the course. In these cases, students will be provided with an addendum to the class syllabus that will supersede the original version.

SERVICES FOR STUDENTS NEEDING ACCOMMODATIONS

Students needing accommodations because of medical diagnosis or major life impairment will need to register with Accessible Campus Community & Equitable Student Support (ACCESS) and complete an intake process before accommodations will be given. Students who believe they have a diagnosis, but do not have documentation, should contact ACCESS for assistance and/or appropriate referral. The ACCESS office is located in the Student Success Center, Room 1203. You can also reach the office by emailing us at myaccess@siue.edu or by calling 618-650-3726.

If you feel you would need additional help in the event of an emergency situation, please notify your instructor to be shown the evacuation route and discuss specific needs for assistance.

DIVERSITY AND INCLUSION

SIUE is committed to respecting everyone's dignity at all times. In order to learn, exchange ideas, and support one another, our virtual and physical classrooms must be places where students and teachers feel safe and supported. Systems of oppression permeate our institutions and our classrooms. All students and faculty have the responsibility to co-create a classroom that affirms inclusion, equity, and social justice, where racism, sexism, classism, ableism, heterosexism, xenophobia, and other social pathologies are not tolerated. Violations of this policy will be enforced in line with the SIUE Student Conduct Code.

The Hub <https://www.siue.edu/csdi> is an excellent resource for students for support and community. Any person who believes they have experienced or witnessed discrimination or harassment can contact Ms. Jamie Ball, Director in the Office of Equal Opportunity, Access and Title IX Coordination at (618) 650-2333 or jball@siue.edu. There is also an online form for reporting bias incidents at https://cm.maxient.com/reportingform.php?SIUEdwardsville&layout_id=10.

ADDITIONAL SUPPORT

ACADEMIC AND OTHER STUDENT SERVICES

As an enrolled SIUE student, you have a variety of support available to you, including:

[Lovejoy Library Resources](#)

[Financial Aid](#)

[Academic Success Sessions](#)

[ACCESS](#)

[Tutoring Resource Center](#)

[Cougar Cupboard](#)

[The Writing Center](#)

[Campus Events](#)

[Academic Advising](#)

[Counseling Services](#)

If you find that you need additional support, please reach out and let me know.

COUGAR CARE

Dealing with the fast-paced life of a college student can be challenging, and I always support a student's decisions to prioritize mental health. Students have access to counseling services on campus (Student Success Center, 0222). Make an appointment by visiting cougarcare.siu.edu or by calling 618-650-2842.

STUDENT SUCCESS COACHES

[Student success coaches](#) work across campus to serve the SIUE student population with the tools and resources to adjust to and meet the demands of the college experience. Success coaches provide direct services such as time management support and referrals to campus resources. If you find yourself in need of academic or personal support, or in a situation that is preventing you from being successful in the classroom, please utilize [Starfish](#) to connect with a coach as soon as possible. The sooner you engage, the sooner you can access the information or tools you need that may help you get back on track.

TECHNICAL SUPPORT

It is your responsibility to address any computer problems that might occur. Such problems are not an excuse for delays in meeting expectations or for missing course deadlines. Contact ITS at 618-650-5500 or at help@siue.edu with any technical concerns. You can also check the functionality of University systems, including Blackboard, at the [ITS System Status page](#), or search the [ITS Knowledge Base](#) for various how-to and troubleshooting guides.

OTHER RESOURCES

LOVEJOY LIBRARY

PHONE: 618.650.4636

WEB: <http://www.siu.edu/lovejoylibrary/>

COMPUTER LABS

WEB: <http://www.siu.edu/its/labsclassrooms/>

TECHNOLOGY SUPPORT O LOVEJOY LIBRARY ROOM 0005

PHONE: 618.650.5500

EMAIL: help@siue.edu

WRITING CENTER - MUC –STUDENT SUCCESS CENTER 1254

PHONE: 618.650.2045

WEB: <http://www.siu.edu/lss/writing/index.shtml>

The schedule is subject to change at the instructor's discretion.

Changes to the schedule may be announced on Teams. If substantial changes need to be made to the schedule, a revised reading and assignment schedule will be posted on BB.

All assignments must be submitted on BB or Teams as described in the assignment – no exceptions. Assignments emailed to me will not be accepted.

Date	Topic	Readings	Assignments
12/16/ – 12/18	Welcome! Studying History The Ancient World	<ul style="list-style-type: none"> • Syllabus • Chapter 1 • Furumoto (1999) • Letters: Other people’s mail • Chapter 2 • Plato’s Allegory of the Cave 	Bonus! About You Survey HW: Personal Artifact (‘doing’ history) Project: Topic
12/18 – 12/20	Renaissance Science and Philosophy Empiricism, Sensationalism, and Positivism Rationalism	<ul style="list-style-type: none"> • Chapter 4 • Discourse Excerpts • Chapter 5 • Locke Excerpts • Chapter 6 	HW: Decartes Zeitgeist (context) Mind-body discussion Part I: Biographical Timeline EXAM 1
12/21 – 12/23	Physiology and Psychophysics Early Approaches Evolution and Individual Differences	<ul style="list-style-type: none"> • Chapter 8 • Chapter 9 • Wundt: Simple Feelings • Chapter 10 	Part II: Philosophical Questions HW: Exhibit Review (curation) Evolutionary Influences discussion
12/26 – 12/28	American Psychology Mental Illness	<ul style="list-style-type: none"> • Chapter 10 • Letters: Wolfe • Chapter 15 	HW: Functionalists (Foundational studies) Part III: Contributions to Psychology EXAM 2
12/29 – 12/31	Behaviorism Neobehaviorism	<ul style="list-style-type: none"> • Chapter 12 • Watson (1913) • Chapter 13 • Walden II Forward 	HW: Interventions (cultural interactions) Behaviorism Paradigm discussion Part IV: Contemporary Perspectives
01/01 – 01/03	Psychobiology Cognitive Psychology Psychology Today	<ul style="list-style-type: none"> • Chapter 18 • Chapter 19 • Sperry (1995) 	Future of Psychology Discussion HW: You as a psychologist Part V: Presentations
01/04 – 01/05	Review and complete cumulative final exam		Review presentations FINAL EXAM