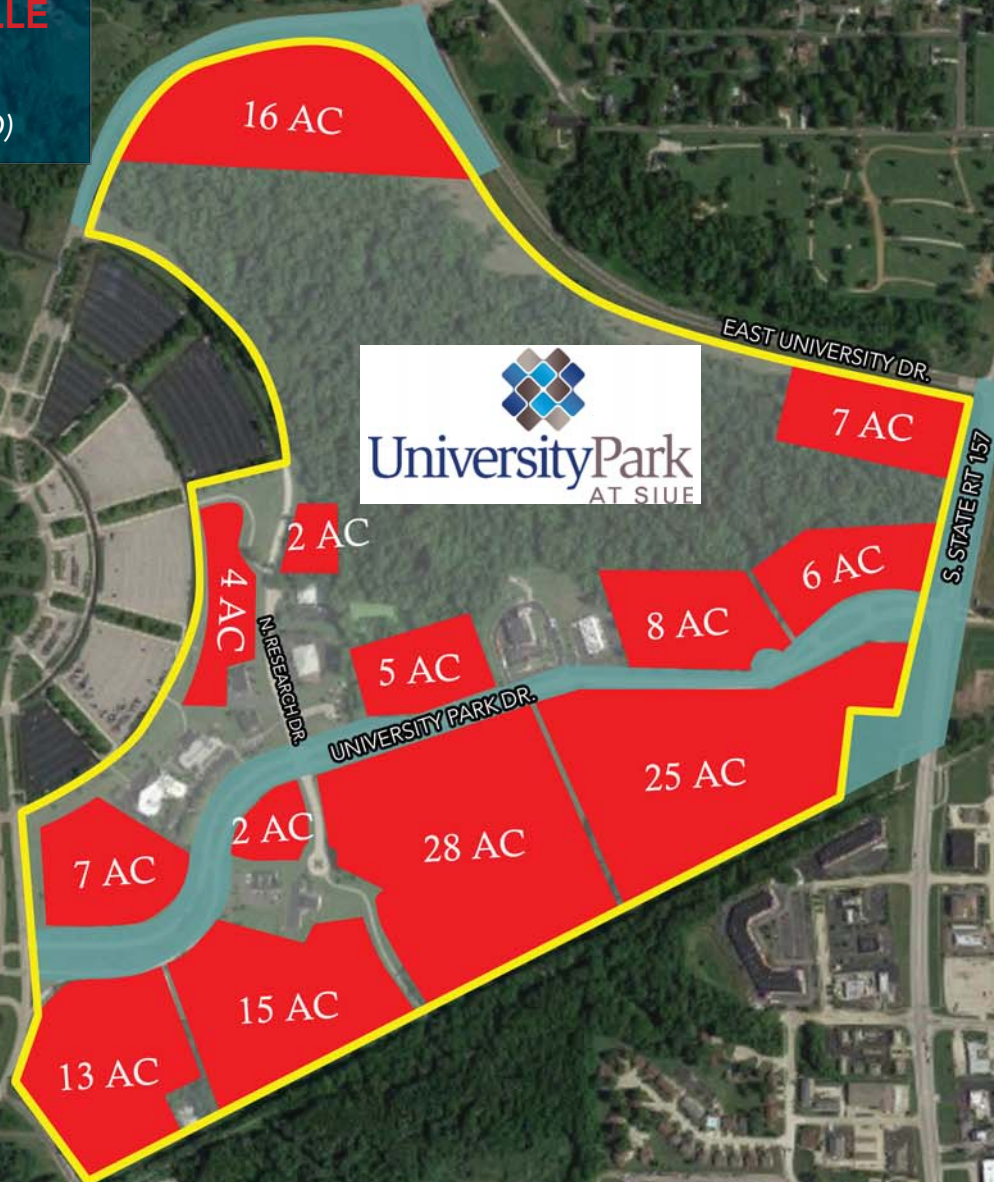


LAND OR BUILD-TO-SUIT AVAILABLE
IN UNIVERSITY PARK @ SOUTHERN
ILLINOIS UNIVERSITY EDWARDSVILLE
CAMPUS

Edwardsville, IL (25 minutes from St. Louis, MO)

SIUE



collaborate. create. thrive.

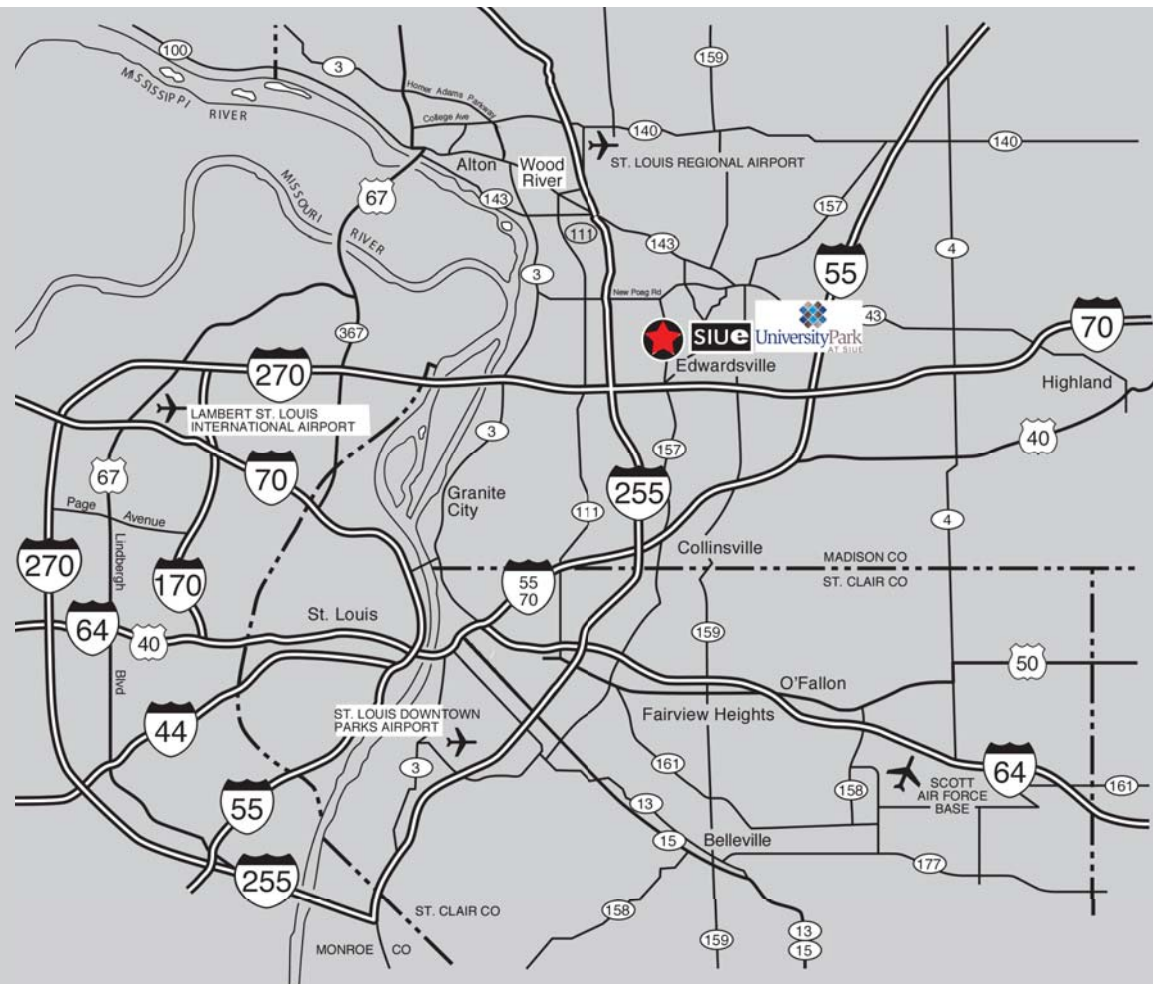
BALKE BROWN
TRANSWESTERN®

EXECUTIVE SUMMARY

University Park at SIUE is a 330-acre technology park located on the campus of Southern Illinois University Edwardsville (SIUE). The Park offers companies an ideal suburban location on a thriving university campus. A highly skilled pool of potential employees and full access to university resources makes this a desirable location for growing companies.

PROJECT HIGHLIGHTS

- Ground leases and build-to-suit sites available
- Suburban location just 25 minutes from Downtown St. Louis
- Lambert-St. Louis International Airport (30 minutes from University Park)
- St. Louis Regional Airport in Bethalto (20 minutes from University Park)
- Fully-improved sites with street lighting, entry signage, landscaping and buried utilities to lot line
- Powerful redundant fiber-optic telecommunications infrastructure
- Access to major regional interstates, including I-255, I-55, I-270, I-70 and I-64
- Call broker for pricing information



University Park offers a variety of benefits for companies:

- Collaborative setting with other modern, dynamic companies
- Environment that will enhance research capabilities, foster innovation and provide a highly educated labor pool
- Work in conjunction with the University to train future employees
- Access a diverse array of employees trained via modern curricula that prepare students for the real world



EDWARDSVILLE, ILLINOIS
Safest College Towns in America -
11th Nationally, *National Council for Home*
Safety & Security
Best Places to Live, *CNN Money*
Great Cities to Raise Kids, *Family Circle*



Southern Illinois University Edwardsville provides students with a quality and affordable education that prepares them for successful careers and lives of purpose to shape a changing world. Built on the foundation of a broad-based liberal education, and enhanced by hands-on research and real-world experiences, the academic preparation SIUE students receive equips them to thrive in the global marketplace and make our communities better places to live.

Situated on 2,660 acres of beautiful woodland atop the bluffs overlooking the natural beauty of the Mississippi River's rich bottomland and only a short drive from downtown St. Louis, the SIUE campus is home to a diverse student body of approximately 14,000 students.

SAMPLE DISCIPLINES

Arts & Sciences – A liberal arts education that helps develop critical-thinking and problem-solving skills.

Dental Medicine – The only dental school in Illinois outside the Chicago metropolitan area, and within a 200-mile radius of St. Louis.

Education, Health, and Human Behavior – real-world experience in a variety of settings that prepares students to become the kind of educators employers are actively seeking.

Pharmacy – an interprofessional, integrated and team-based learning approach to pharmacy practice and pharmaceutical science education.

Nursing – fully accredited programs that are in the top 25% of Nursing Grad Schools worldwide.

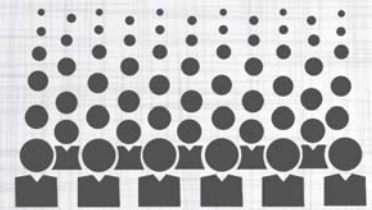
Business – among an elite five percent of business schools worldwide that have earned the prestigious accreditation from AACSB International.

Engineering – one of the finest and most comprehensive engineering schools in the region.

SIUE

Approximately
14,000 Students

SIUE

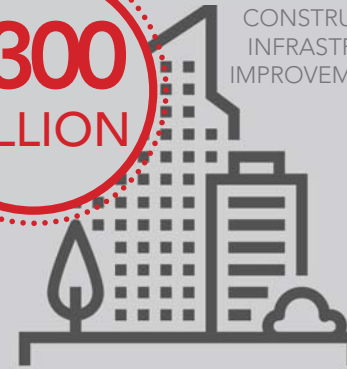


APPROXIMATELY
14,000
STUDENTS



90%
OF SIUE STUDENTS SECURE
A JOB WITHIN 6 MONTHS
OF GRADUATION

\$300
MILLION



CONSTRUCTION &
INFRASTRUCTURE
IMPROVEMENT PLAN



\$514
MILLION
REGIONAL
ECONOMIC
IMPACT

(Source: <https://www.siue.edu/about/pointsofpride.shtml>)

AWARDS & RECOGNITIONS



11TH
#1

NATIONALLY
2018 SAFEST
COLLEGE CAMPUSES
IN THE U.S.

IN ILLINOIS
RANKED AHEAD OF
ALL INSTITUTIONS IN
MISSOURI



#4



#2

FOR FEDERAL
RESEARCH AND
DEVELOPMENT
EXPENDITURES



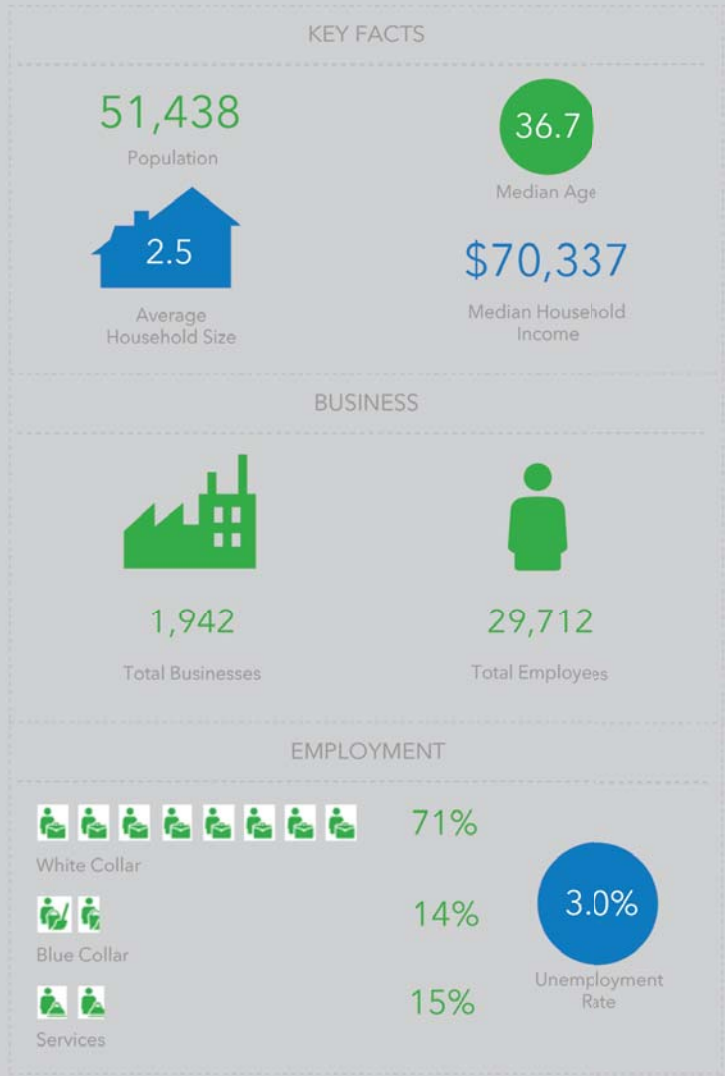
VICTORY MEDIA
NAMED SIUE A MILITARY
FRIENDLY SCHOOL FOR THE 8TH
CONSECUTIVE YEAR.

*This honor places SIUE in the top 20% of
institutions that are doing the most to em-
brace America's military service members,
veterans and spouses as students to ensure
their success on campus.*



TOP COLLEGES FOR DIVERSITY

DEMOGRAPHICS (5 Mile)



collaborate. create. thrive.



For more information about SIUE and University Park please visit
<http://www.siu.edu/universitypark/>

Click to View Drone Footage of SIUE and University Park:
<https://www.youtube.com/watch?v=gkEB3hmczW8>



MIKE HURLEY
Vice President - Commercial Brokerage
314.484.1469
mhurley@balkebrown.com

MICHAEL HOLLAND
Associate
618.520.9443
mholland@balkebrown.com