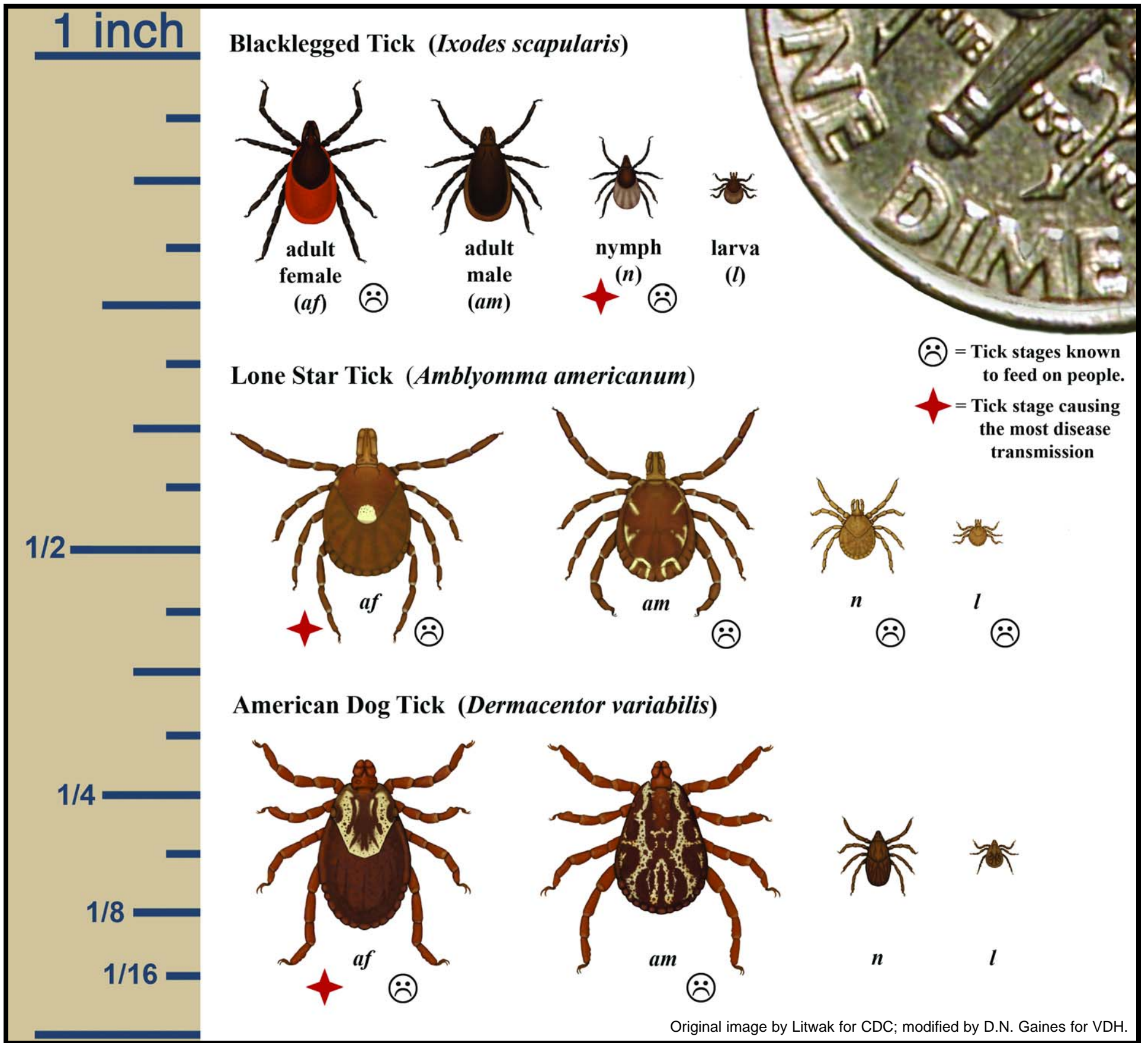


Tick Identification Chart



Tick-borne Disease Chart

Tick-borne Diseases	Anaplasmosis	Ehrlichiosis	Babesiosis	Lyme Disease	Rocky Mountain Spotted Fever	Tularemia
Blacklegged Tick <i>Ixodes scapularis</i>	Vector		Vector	Vector		
Lone Star Tick <i>Amblyomma americanum</i>		Vector				Vector
American Dog Tick <i>Dermacentor variabilis</i>					Vector	Vector
Tick Stage that Transmits the Most Disease to People	Nymph	Adult	Nymph	Nymph	Adult Only	Nymph or Adult
Minimum Feeding Time for Disease Transmission	24 hours	24 hours	36 hours	36 hours	4-6 hours	Not known

For more information on tick-borne diseases, visit www.vdh.virginia.gov/TickBrochure.

June 2010